

### CLIENT

# CLARK

CONSTRUCTION



### CUSTOMER OVERVIEW

Clark Construction Group, LLC, is one of the most experienced and respected providers of construction services in the United States. For over a century, Clark, which is American owned and operated, has been transforming the ideas and visions of their clients into award-winning projects. The company is consistently ranked among the country's largest building and civil construction companies with annual revenue in excess of \$4 billion, and regional offices from coast to coast.

### THE PROBLEM

Clark Construction leads hundreds of active projects at any given time and **undetectable water leaks during construction resulting from environmental conditions and system failures** were causing millions of dollars in damage. To manage this problem, Clark needed visual insight into water delivery and consumption during construction.

### THE BRIEFING

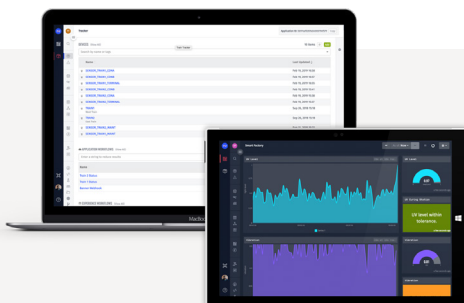
A lead engineer at Clark identified a potential solution, which involved installing and connecting a flowmeter, pressure sensor, and control valve in the domestic water main, to an IoT platform. This engineer engaged Losant to help with the implementation. Team members were able to quickly and easily set up a test at a Clark job site by installing the valve and sensors in the water main and connecting it to the Losant IoT platform. This gave Clark **a visual tool to monitor water flow and control the water main of a construction site**. Clark was able to see current water pressure, water flow and water main on/off status. In addition to receiving fulltime, real-time visibility, Clark also had the capability to turn the water main on or off from a smart device. The company is now outfitting many of their job sites with the same solution.

### THE RESULTS

The data visible on Losant's IoT dashboards will prevent Clark from spending **millions of dollars in damages and lost time**.

### THE NEXT OBJECTIVE

Clark Construction sites can benefit from implementing IoT technology in many areas. The next possible wave of Losant solutions will focus on **employee safety, asset tracking, and higher levels of monitoring**.



## LOSANT ENTERPRISE IoT PLATFORM TEAM: WHAT WE BELIEVE

Losant is a progressive product team composed of software engineers, solutions engineers, and automation specialists. Together, we produce superior technology for enterprise IoT solutions. We believe in continuous improvement and work toward our vision of an ever-connected world. As we adapt to our changing environment and add features to our IoT cloud platform, we consider usability, flexibility, reliability, and security to promote ease of use for our customers.

[WWW.LOSANT.COM](http://WWW.LOSANT.COM)



## CLIENT

**CLARK**  
CONSTRUCTION

## INDUSTRY

**CONSTRUCTION**

## THE SOLUTION

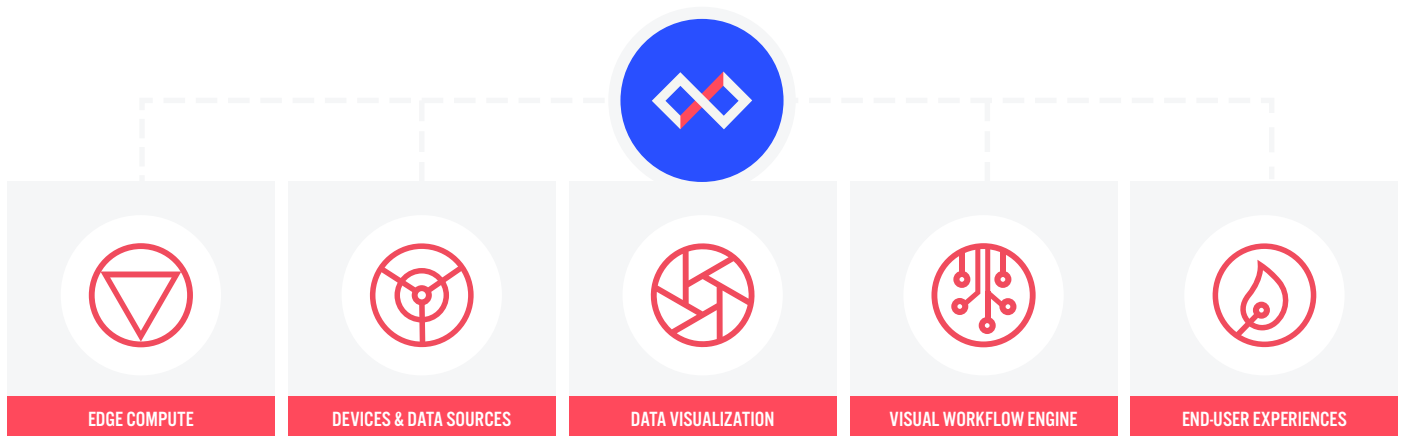
Clark Construction needed to find a way to mitigate water damage on its job sites. Using Losant, they were able to identify potential issues before they arose, resulting in potentially millions of dollars and hundreds of man hours in savings.

*"After testing many other products and not having much luck, I was very optimistic when I tried Losant. With no programming background I was still able to get our first job site connected and able to monitor the water main remotely. A big problem has been solved thanks to Losant."*

**BOB GELETY**  
LEAD ENGINEER

**LOSANT PROVIDES THE TOOLS YOU NEED TO SUCCEED**

The Losant Enterprise IoT Platform is an application enablement platform which allows enterprises to effectively build applications and create solutions that securely scale to millions of devices. All of Losant's components, from Edge Compute to End-User Experiences, work seamlessly together to transform real-time data from connected and non-connected devices into tailored IoT solutions.


[WWW.LOSANT.COM](http://www.losant.com)


© LOSANT IoT, 2019